

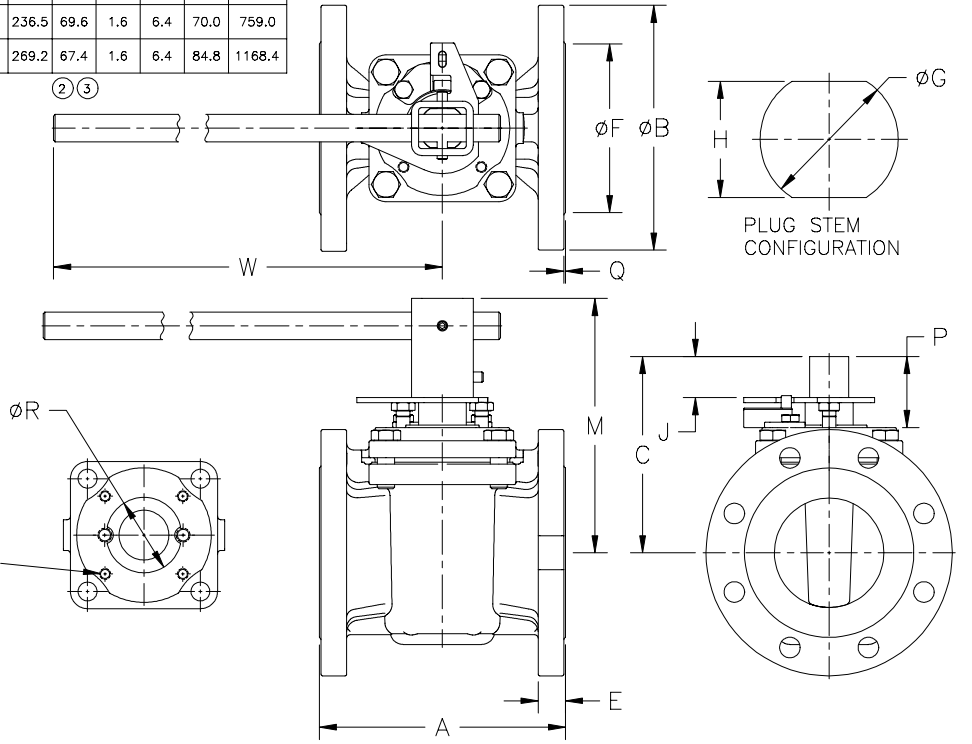
IDENTIFICATION NUMBER	 <b>FLOWSERVE</b> FLOWSERVE CORPORATION COOKEVILLE VALVE OPERATION COOKEVILLE, TN 38501	CERTIFIED FOR DIMENSIONS ONLY	SUBMITTED FOR CUSTOMER APPROVAL ONLY	NO.	DATE	REVISION	BY
STANDARD		BY _____	CUSTOMER _____	2	11/15/01	ADDED ISO MOUNTING HOLE DEPTH	JWP
VP6276C		CUSTOMER _____	ORDER NO. _____	FLOWSERVE ORDER NO. _____			ALSO REVISED "P & J" DIM.
ISSUE NO. 3		ORDER NO. _____	FLOWSERVE ORDER NO. _____	3	4/9/03	CORRECT "P" DIM.S	TAG
4-6" QV		ITEM NO. _____	APPROVED BY: _____ DATE _____				
100-150 DIN		DATE 5/29/01	APPROVED EXCEPT AS NOTED <input type="checkbox"/> DO NOT RESUBMIT <input type="checkbox"/>				
	DRAWN BY JDH	CHECKED BY _____	RESUBMIT CORRECTED DRAWING <input type="checkbox"/>				

**ENGLISH UNITS**

VALVE SIZE	DRILLING CLASS 150			DRILLING CLASS 300			DRILLING CLASS 600			ISO MOUNTING PAD			A CLASS			B CLASS			C	E CLASS			F	G	H	J	M	P CLASS		Q CLASS			R	W			
	No.	Size	BC	No.	Size	BC	No.	Size	BC	No.	Tap Size	HOLE DEPTH	BC	150	300	600	150	300		600	150	300						600	150/300	600	150	300			600		
	4	8	.75 [19.1]	7.50 [190.5]	8	.88 [22.2]	7.88 [200.0]	8	1.00 [25.4]	8.50 [215.9]	F10	M10	.63 [15.9]	4.02 [102.0]	9.00 [228.6]	12.00 [304.8]	17.00 [431.8]	9.00 [228.6]		10.00 [254.0]	10.75 [273.1]	7.18 [182.2]						.94 [23.8]	1.25 [31.8]	1.75 [44.5]	6.19 [157.2]	1.687 [42.85]			[42.60]	1.421 [36.09]	[35.97]
6	8	.88 [22.2]	9.50 [241.3]	12	.88 [22.2]	10.58 [268.7]	12	1.13 [28.6]	11.50 [292.1]	F12	M12	.81 [20.6]	4.92 [125.0]	10.50 [266.7]	15.88 [403.2]	22.00 [558.9]	11.00 [279.4]	12.50 [317.5]	14.00 [355.6]	8.44 [214.1]	1.00 [25.4]	1.44 [36.6]	2.13 [54.0]	8.50 [215.9]	1.687 [42.85]	[42.60]	1.421 [36.09]	[35.97]	1.47 [37.3]	10.60 [268.2]	2.65 [67.4]	2.62 [66.6]	.06 [1.6]	.06 [1.6]	.25 [6.4]	3.34 [84.8]	46.00 [1168.4]

**METRIC UNITS**

VALVE SIZE	DRILLING CLASS PN 10-16		DRILLING CLASS PN 25-40		ISO MOUNTING PAD			A CLASS		B CLASS		C	E CLASS		F CLASS		G	H	J	M	P	Q CLASS		R	W			
	No.	Size	BC	No.	Size	BC	No.	TAP SIZE	HOLE DEPTH	BC	10-16		25-40	10-16	25-40	10-16						25-40	10-16			25-40		
	100	8	18.0	180.1	8	22.0	190.0	F10	M10	.63 [15.9]	4.02 [102.0]		350.0	350.0	219.9	235.0						182.3	21.8			25.8	158.0	162.0
125	8	18.0	210.0	8	26.0	220.0	F10	M10	.63 [15.9]	4.02 [102.0]	400.1	400.1	249.9	269.9	182.3	23.6	27.6	190.2	190.2	42.85 [1076]	36.09 [917]	40.6	236.5	69.6	1.6	6.4	70.0	759.0
150	8	22.0	240.0	8	26.0	249.9	F12	M12	.81 [20.6]	4.92 [125.0]	480.1	480.1	285.5	300.0	214.1	27.0	29.8	212.0	218.0	42.85 [1076]	36.09 [917]	37.3	269.2	67.4	1.6	6.4	84.8	1168.4



APPLICABLE STANDARDS  
 FACE-FACE = ASME B16.10 FLANGED  
 WALL THICKNESS = ASME B16.34  
 END CONNECTION (FLANGED) = ASME B16.5