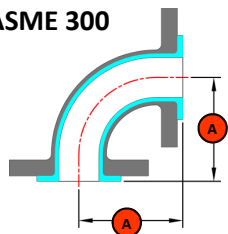
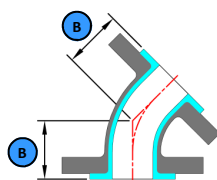


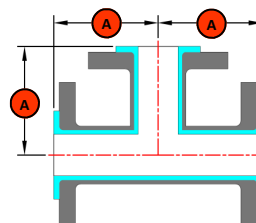
ASME 300



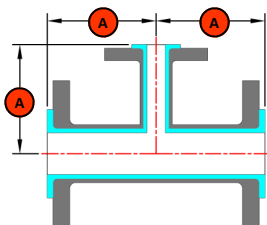
90 Degree Elbow



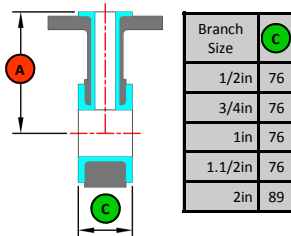
45 Degree Elbow



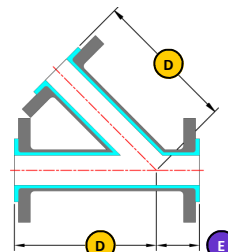
Equal Tee



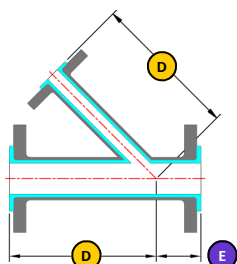
Reducing Tee



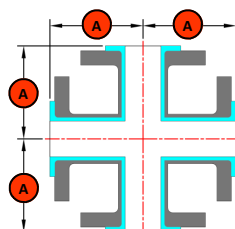
Instrument Tee*



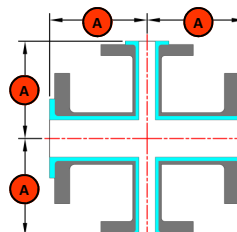
Equal Lateral Tee



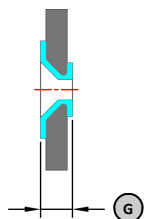
Reducing Lateral Tee



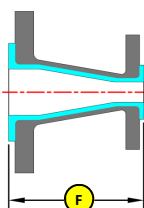
Equal Cross



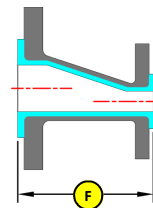
Reducing Cross



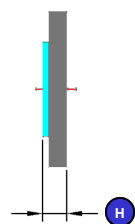
Reducing Flange



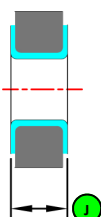
Concentric Reducer



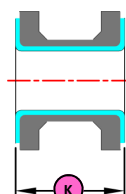
Eccentric Reducer



Blank Flange



Type 2 Spacer



Type 3 Spacer

Nominal Bore	DN	A	B	D	E	F	G	H	J Max.	K Max.	Van Stone Spool Min.	Fixed/ Rotating Spool Min.	Spool Max.
1 in	DN 25	102	57	165	51	114	30	22	60	100	250	100	6000
1 1/2 in	DN 40	114	70	216	64	114	30	25	60	100	250	110	6000
2 in	DN 50	127	76	229	64	127	30	27	70	150	250	120	6000
3 in	DN 80	152	89	279	76	152	35	33	70	150	250	150	6000
4 in	DN 100	178	114	343	76	178	40	36	70	150	250	165	6000
6 in	DN 150	216	140	445	102	229	45	41	80	150	500	185	6000
8 in	DN 200	254	152	521	127	279	45	46	80	200	500	210	3000
10 in	DN 250	292	178	610	140	305	50	52	80	200	n/a	230	3000
12 in	DN 300	330	203	698	152	356	55	55	80	200	n/a	250	3000
14 in	DN 350	381	216	787	165	406	60	58	80	200	n/a	275	3000

* Please note that because of the potential for bolt clashes many sizes of instrument tee are not possible—please consult.

The face to face dimensions of reducing fittings is normally defined by the nominal bore of the larger size. Special dimensions are available on request. For further information go to our website at www.crp.co.uk or call us on +44(0)1706 756400. Please note, no warranties are given on the accuracy of the data, which may be subject to revision, for confirmation please refer to the appropriate standards documents. CRP's dimensions may vary from those of other manufacturers and not all components dimensioned are standard CRP products.

● PTFE/PFA Lined Piping Systems ● Atomac PFA Lined Ball Valves ● Durco Lined and Unlined Plug Valves ● Durco Lined Butterfly Valves
● PTFE Lined Dip Pipes ● Safety Shields ● PFA Lined Poppet, Swing and Ball Check Valves ● PFA Lined Strainers ● PFA Lined and Unlined Tubular Sight Glasses and Level Gauges ● PTFE Bellows ● In-line, Surface Mount and Reactor Sampling Systems ●